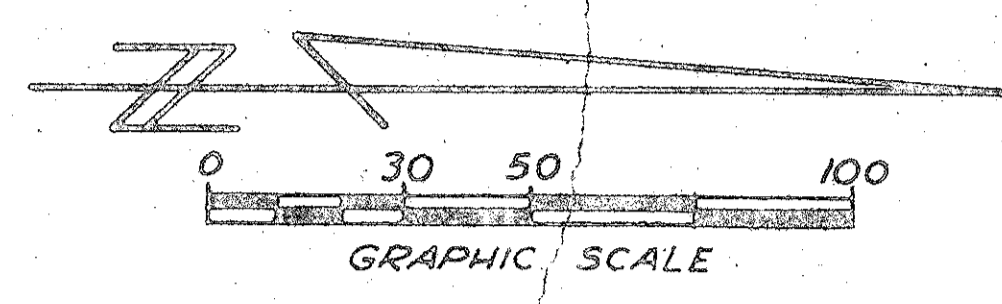


VILLAGE OF TURNBERRY

PHASE II

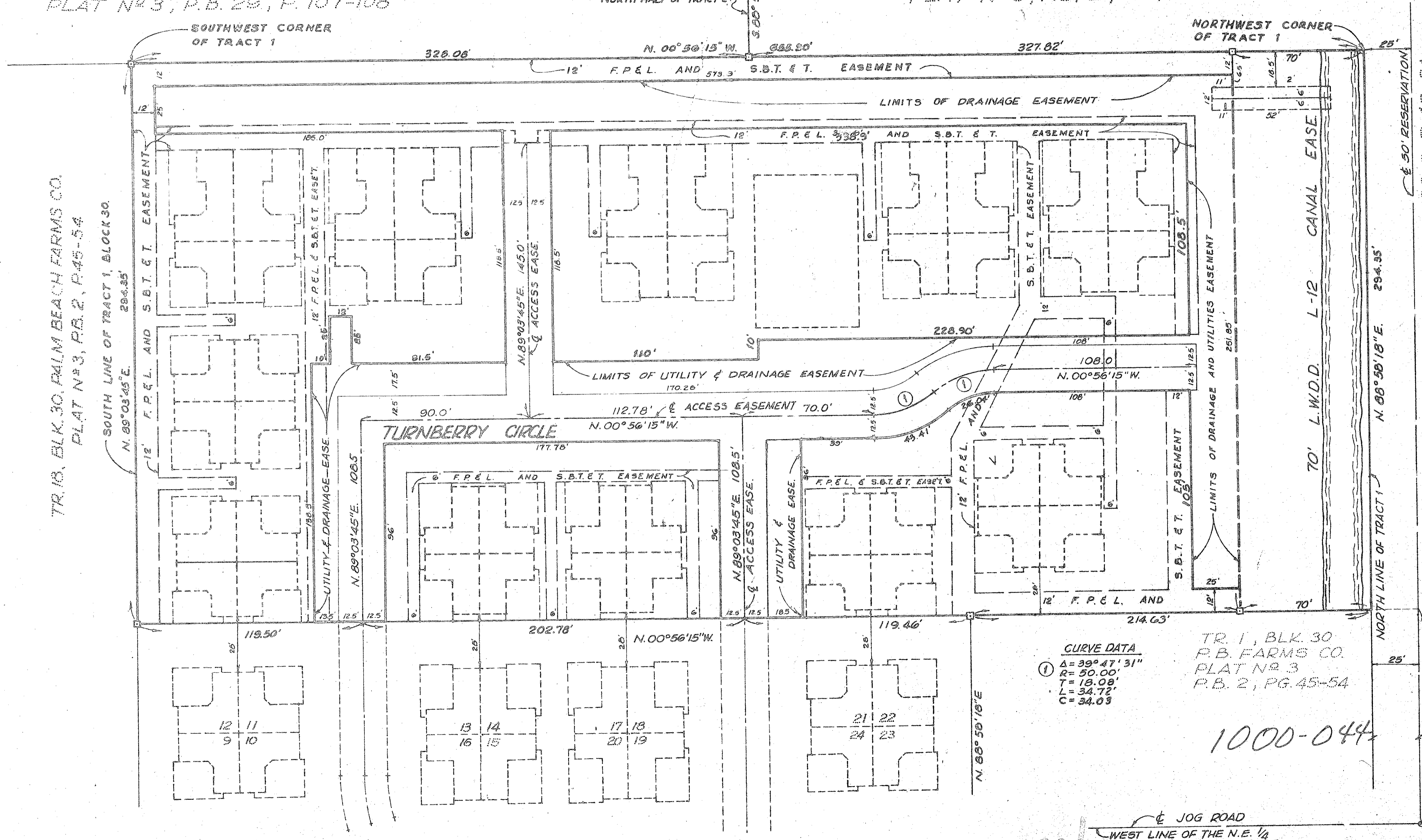
120

IN SECTION 27, TOWNSHIP 44 SOUTH, RANGE 42 EAST; BEING A REPLAT OF A PORTION OF TRACT 1, BLOCK 30, PALM BEACH FARMS COMPANY PLAT NO. 3, AS RECORDED IN PLAT BOOK 2, PAGES 45 THROUGH 54, PUBLIC RECORDS OF PALM BEACH COUNTY, FLORIDA



PALM BEACH GOLF CLUB ESTATES
PLAT NO. 3, P.B. 29, P. 107-108

N 1/2 TR. 2, BLK. 30, PALM BEACH FARMS CO.
PLAT NO. 3, P.B. 2, P. 45-54



TR. 15, BLK. 30, PALM BEACH FARMS CO.
PLAT NO. 3, P.B. 2, P. 45-54

TR. 79, BLK. 22, P.B. FARMS CO. PLAT NO. 3, P.B. 2, P. 45-54

CURVE DATA
 ① $\Delta = 39^\circ 47' 31''$
 $R = 50.00'$
 $T = 18.09'$
 $L = 34.72'$
 $C = 34.03'$

TR. 1, BLK. 30
P.B. FARMS CO.
PLAT NO. 3
P.B. 2, PG. 45-54

1000-044

VILLAGE OF TURNBERRY
P.B. 37, P. 106 & 107

NOTE:
SEE SHEET 2 OF 4 FOR BUILDING LOCATIONS.
SEE SHEET 4 OF 4 FOR BUILDING SIZES & TYPE.

39/120

ADAIR & BRADY, INC. CONSULTING ENGINEERS & LAND SURVEYORS		RECORD PLAT	
WEST PALM BEACH		SCALE 1" = 30'	
BY WHEATON	DATE MAY 79	FPH46	3
BY J.L.K.	DATE	1-8892 A	